

Weak Current and Audio Video Systems Catalogue

About Us



MGA Engineering Global was established in 2022 within the framework of its founders' more than 25 years of industry experience, knowledge and customer satisfaction.

By closely following the latest technology developments in the sector; We provide the most accurate engineering services from the beginning to the end of the project, taking into account the principles of legal regulations, environmental awareness, occupational health and employer satisfaction.

Our company offers professional solutions to its customers in many fields such as electrical contracting services, mechanical contracting services, weak current systems, professional audio and video systems, automation systems.

In order to provide solutions to customers' problems and requests, we blend our knowledge and experience with the quality of the world's leading brands, so we can shape the most accurate projects/systems and present them to our customers.

We offer solutions not only in Turkey but also on a global scale with our educated and professional staff who have carried out many projects at Turkey and abroad.

All of our projects are working in accordance with world standards. In addition, all of our projects are studied in accordance with the special laws and regulations of local governments during the time. In this way, we offer all our projects to our customers as from start to finish, without any worries of legal or any other matter.



Weak Current Services



The brands we work with;

Honeywell

SAMSUNG

Dwyer

EAE

 **HUAWEI**

 **UBIQUITI**
NETWORKS

 **GRANDSTREAM**
CONNECTING THE WORLD

 **Mitel**

 **WISI**

In many areas such as congress centers, conference halls, theater and opera halls, hospitals, hotels, business towers, private and official residences, presidential palaces and residences; We offer turnkey weak current services from project design to product supply, commissioning and testing.

- Fire Detection Systems
- Voice Alarm Systems
- CCTV (Closed Circuit Television) Recording and Monitoring Services
- SMATV and IPTV Systems
- Access Control (Controlled Access) Systems
- Data and Telephone Systems
- Mechanical Automation Services
- Lighting Automation Services
- Energy-SCADA Services

Honeywell

IP Camera Series



Performance Series IP 1080p Bullet Camera

- 1920x1080 resolution
- H.265 codec video compression
- True day and night (TDN) IR-cut filter
- 3.6 mm fixed lens
- 30 m IR illumination, depending on scene reflectance
- Built-in PoE and 12V DC support
- Plug-and-play with Honeywell Performance network video recorders (NVRs)
- IP66 and IK10 rated rugged housing



IP RUG DOME Camera

- 1/3-inch 4 MP progressive scan imager
- 2688x1520 resolution; 2.7 mm to 13.5 mm MFZ lens
- True day and night (TDN) IR-cut filter; wide dynamic range (WDR)
- 30 m IR illumination, depending on scene reflectance
- H.265 smart codec; dual stream support
- Support up to 128 GB Micro SDHC card (class 10)
- Corridor mode
- PoE (802.3af) or 12V DC support
- Plug-and-play compatible with Honeywell Performance Series embedded network video recorders (NVRs)
- IP66 and IK10 rated rugged housing



HDZP252DI 2MP DWDR 25x PTZ IR IP Cameras

- 4.8-120 mm, F1.6-F4.4, 25x optical zoom lens
- 1/2.8" progressive scan image sensor
- Up to 50/60 fps primary stream. Up to 25/30 fps secondary streams
- 100 m IR distance, depending on scene reflectance
- Multiple, selectable compression formats (H.265/H.264/ MJPEG)
- ONVIF profile S and G compliant
- Water resistant IP66 ingress protection rating

4/8/16 CHANNELS NVR - HENXX1X3

- H.265/H.264 codec decoding
- Supports up to four alarm input channels and two alarm relay output channels
- Supports sending notifications through email, FTP, and/or HTTP
- Supports uploading still images at the time of the event through email and/or FTP
- Configurable to automatically detect and respond to motion in the scene, alarm inputs, and network failure or tampering
- Maximum incoming bandwidth of 200 Mbps
- Supports visual or auditory notifications (a flashing light, bell, or siren)
- Supports Smart Face detection search



SAMSUNG

IP Camera Series



SAMSUNG - WISENET XNO-6080R

- Max. 2megapixel (1920 x 1080) resolution
- 2.8 ~ 12mm (4.3x) motorised varifocal lens
- Max. 60fps@all resolutions (H.265/H.264)
- H.265, H.264, MJPEG codec supported, Multiple streaming
- Day & Night (ICR), WDR (150dB), Defog
- Loitering, Directional detection, Fog detection, Audio detection,
- Digital auto tracking, Sound classification, Tampering
- Motion detection, Handover
- SD/SDHC/SDXC memory slot (Max. 512GB)
- Hallway view, WiseStream II support
- IR viewable length 50m, IP67/IP66, NEMA 4X, IK10
- IR LED Viewable length: up to 12m at night for license plate capture, max speed of 80km/h
- LDC support (Lens Distortion Correction)
- PoE / 24V AC, 12V DC, Bi-directional audio support



SAMSUNG - WISENET XND-8080R

- Max. 5megapixel (2560 x 1920) resolution
- 3.9 ~ 9.4mm (2.4x) motorized varifocal lens
- Max. 30fps@all resolutions (H.265/H.264)
- H.265, H.264, MJPEG codec supported, Multiple streaming
- Day & Night (ICR), WDR (120dB), Defog
- Loitering, Directional detection, Fog detection, Audio detection,
- Digital auto tracking, Sound classification, Tampering
- Motion detection, Handover
- SD/SDHC/SDXC memory slot (Max. 512GB)
- Hallway view, WiseStream II support
- IR viewable length 30m, IK08
- LDC support (Lens Distortion Correction)
- PoE / 12V DC, Bi-directional audio support



SAMSUNG - WISENET HRX-1635

- 5-in-1 16CH Pentabrid DVR
- AHD/HDTVI/HDCVI/CVBS/IP inputs
- Total 18CH(Analog Maximum 16CH and Network Maximum 18CH), up to 8MP
- H.265, H.264, MJPEG
- 8fps@8MP, 12fps@5MP, 15/12fps@4MP, 30/25fps@2MP recording
- Coaxial control
- Smart search(only Network camera)
- Up to 8 SATA HDDs(6TB/HDD)
- HDMI/VGA Dual monitor (Expand mode)
- P2P service(QR code connect)

Honeywell

Card Access Systems



OMNIPROX™ SERIES

- Variety of sizes to choose from to fit any décor:
 - Mullion style
 - Single-gang style (US)
 - Single-gang style (UK)
- Host LED control and optical tamper output
- Hidden mounting screws deter vandalism
- Potted for superior weather-resistance
- Wiegand or Clock & Data output
- Genuine HID & EM410x Prox compatible
- Includes vandal-resistant security and installation tool with every reader.
- Adhesive-backed mounting template reduces installation time and risk of mounting errors
- Three bezels included with OP10, OP30, OP40 and OP45 reader models: black, charcoal gray & ivory
- Lifetime warranty
- ROHS compliant
- Compatible with card formats up to 85 bits in length including 26-bit, 34-bit and Corporate 1000 formats



MPA2 Access Control Panel

- Add MAXPRO® Cloud or WIN-PAK® for more advanced features, such as video and intrusion integrations, advanced reporting, rules and photo badging.
- 128-bit AES encrypted bi-directional reader-panel communicating (OSDP:V2) protocol
- Metal enclosure with included 3.5-Amp power supply and battery backup available for traditional installs or retrofits.
- RJ45 connection for Ethernet, Interfaces, Readers and Doors
- Expand single door controller to manage 2 to 4 doors* without additional HW
- Add additional panels and manage using the embedded interface via Ethernet Virtual Loop (EVL)** or RS-485 loops.
- On-board additional auxiliary REX (Request to Exit) and Door Contact inputs per door (2X) enables turn style, double lock and 4 door configuration* without extra hardware.
- 256-bit AES encrypted communication between panel and hosts (browser, cloud, and WIN-PAK)®.
- Panel tamper switches included on both plastic* and metal enclosures.
- Embedded, cloud, or software-hosted capability from one panel
- Deploy MPA2 for a large variety of jobs — from basic access control for a single site up to multi-site, enterprise-level security with fully integrated access, video and intrusion.



OMNIPROX™ CREDENTIALS Contactless Proximity Cards

- OmniProx 125 kHz compatible proximity credentials
- External numbering for easy identification and control
- Available with high coercivity magnetic stripe (4000 Oe - un-encoded, ISO only) for added capability
- Individually wrapped and labeled packs of 25 cards for added flexibility and convenience for re-sellers
- PVC construction (ISO) or ABS shell with PVC insert (Clamshell) that resists cracking and breaking while delivering fast read times
- Available in standard 26 bit or Honeywell 34 bit formats



Dual-Voltage Electric Door Strike

Dual-voltage electric door strikes provide over 1,300 lbs of holding force.

Dual-voltage electric door strikes provide over 1,300 lbs of holding force. Strikes include three face plates for use with hollow metal, wood, or aluminum frames, and are fail-secure/fail-safe field reversible. The adjustable keeper and small backbox fit almost any application. They are used to retrofit existing doors or as lock replacements and come with neoprene fillers.



PEXB Piezoelectric Request to Exit Button

PEXB piezoelectric request to exit buttons are designed for indoor and outdoor use and feature an illuminated ring that changes color when the button is touched.

Honeywell



DXc Range Fire Alarm Control Panel

- Network up to 16 loops (16x1 loop panels, 8x2 loop panels, 4x4 loop panels or any mix up to max 16 loops)
- True peer-to-peer and fault tolerant network for high system reliability
- Optional 40 or 80 zone alarm LEDs
- Easy 5 key-press set-up
- Large blue LCD display



Optical smoke detector IQ8Quad 802371

- Photoelectronic smoke detector to guarantee reliable early detection of fires.
- Intelligent fire detector with decentralised intelligence, automatic function self-test, alarm and operating data memory, alarm display, soft addressing and separate operating display.



MCP5A Indoor Callpoint

- Unique 'Plug & Play' installation concept
- Total 'Flex-Ability' in the choice of operating element
- Anti-Tamper facility
- Enhanced aesthetics
- Backward compatibility



Input/Output Module

- Dual inputs
- Single relay output
- DIN rail mounting option
- Surface mounting option
- Tri-colour LED status indication
- Built-in short circuit isolators
- Visible address selector switches
- LED status visible in 2 planes
- Plug in connectors



Intillegent Detector Base Sounder

- Faster and flexible installation
- Reduced install errors and easy fault finding
- Reduced full life costs with High quality robust materials for longer life
- Reduced inventory count
- Excellent system performance
- High efficiency piezo disk and horn profile generate excellent sound output
- Advanced protocol enabled controllable sound output, tone selection



AirEngine 5761-21 Access Point

A next generation indoor Wi-Fi 6 (802.11ax) Access Point (AP), AirEngine 5761-21 supports six spatial streams and features built-in Smart Antennas, where Wi-Fi signals follow users to deliver always-on coverage, with a maximum rate of 5.375 Gbit/s.

This AP excels in scenarios requiring high bandwidth and a high-quality network experience, from small and midsize enterprise offices and education institutions to retail outlets.

HUAWEI S5720-36C-EI-28S-AC

Huawei S5720-36C-EI-28S-AC Gigabit Switch provides resilient, energy-efficient GE ports for access switching in data centers, and aggregation switching in enterprise campus networks. With twenty-eight 100/1,000 Base-X SFP ports, four combo 100/1,000 Base-T Ethernet ports and four 10G SFP+ ports, its performance enhancements include advanced processing hardware, large MAC address and routing tables; It also has multiple cards modules to meet customer s' different needs. Super Virtual Fabric (SVF) support enables intelligent virtualization, iStack clustering, and operation in N + 1 backup mode for simplified O&M and high availability. Mature IPv6 features ensure smooth migration to next-generation IP networking.



Access Point AC Pro

Dual-band WiFi 5 access point designed to support high-density networks and critical system applications.

Features:

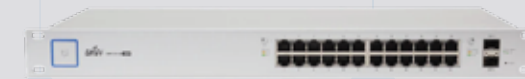
- 2.4/5 GHz WiFi 5 bands (3x3 MIMO)
- 1.3 Gbps aggregate throughput rate
- Balanced antenna pattern for enhanced mounting versatility
- (1) GbE RJ45 port (PoE In)*
- (1) GbE RJ45 port for extended devices

Cloud Key Gen2 Plus

Compact, desk or rack-mountable* UniFi OS Console with a pre-installed 1TB hard drive (HDD). Pair this console with a UXG Pro, or a third-party gateway**, to manage your UniFi application suite.

Features:

- Pre-installed with UniFi Network and Protect
- Powered via PoE or QC 2.0 USB-C
- (1) 2.5" HDD bay with a pre-installed 1TB HDD***



Switch 24 PoE (250W)

Layer 2, PoE switch with (16) GbE, PoE+ and 24V passive PoE RJ45 ports and (2) 1G SFP ports.

The Switch 24 PoE 250W (US 24 PoE 250W), a fully managed switch with (24) GbE RJ45 ports and (2) 1G SFP ports. Each of the switch's ports can provide either PoE+ or configurable, 24V passive PoE to UniFi access points or other PoE devices. This switch can be monitored or configured from anywhere with the powerful, intuitive UniFi Network web application and mobile app.

Features:

- (24) GbE, PoE+ and 24V passive PoE RJ45 ports
- (2) 1G SFP ports
- 250W total PoE supply



UCM6300 Series IP PBX

- Supports up to 3000 users and up to 450 concurrent calls
- Zero configuration provisioning of Grandstream SIP endpoints
- Built-in conferencing & meetings platform; supports desktop, Wave app, and SIP endpoints
- Wave for Android, iOS, Chrome and Firefox browsers allows communication with all UCM6300 users & solutions
- API available for third-party integrations, including CRM and PMS platforms
- Advanced security protection with secure boot, unique certificate and random default password to protect calls and accounts
- Three Gigabit auto-sensing RJ45 network ports with integrated PoE+ and support NAT router
- Automated NAT firewall traversal service facilitates secure remote connections
- Supports Full-Band Opus voice codec and H.264/H.263/H.263+/H.265/VP8 video codec, jitter resilience up to 50% packet loss
- Compatible with GDMS for cloud setup, management and monitoring
- Based on Asterisk* version 16 open source telephony operating system



GRP Series Essential IP Phones GRP2604(P)

- 3 lines, 6 SIP accounts, up to 3 call appearances
- Supported by GDMS which provides a centralized interface to configure, provision, manage and monitor Grandstream devices
- Electronic Hook Switch (EHS) support for Plantronics, Jabra, and Sennheiser headsets
- Full-duplex speakerphone with HD audio to maximize audio quality and clarity
- Equipped with noise shield technology to minimize background noise
- Dual switched autosensing 10/100/1000 Mbps Gigabit Ethernet ports with integrated PoE (GRP2604P only)
- Supports 5-way audio conferencing for easy conference calls
- Enterprise-level protection including secure boot, dual firmware images, and encrypted data storage
- Swappable faceplate to allow for easy logo customization



GRP Series Of Professional IP Phones GRP2616

- HD audio, handset and speakerphone with support for wide-band audio
- 6 line keys with up to 6 SIP accounts
- Dual LCD screens with digital BLF Keys
- Enterprise-level protection including secure boot, dual firmware images, and encrypted data storage
- Integrated dual-band 802.11 a/b/g/n/ac Wi-Fi
- Dual switched auto-sensing 10/100/1000 Mbps Gigabit Ethernet ports with integrated PoE
- Swappable face plates to allow for easy logo customization
- Integrated Bluetooth



DECT Cordless DP760

- Up to 2 concurrent HD calls
- Extends an additional range of 300 meters outdoors and 50 meters indoors for added mobility
- Automatic or manual association to DP750/DP752 base stations for easy use
- Supports Plug-n-Play features like auto association, auto region detection and seamless call handover
- Automated provisioning options include XML config files
- Ethernet connection provides PoE features



DECT Cordless DP722

- Supports a range of up to 350 meters outdoors and 50 meters indoors when used with the DP752 (300 meters outdoors when used with DP750)
- 1.8 inch (128x160) color LCD with 2 programmable soft keys
- Offers 20 hours talk time and 250 hours standby time
- Supports up to 10 SIP accounts and 10 lines per handset as well as 3-way conferencing
- Push-to-talk via a configurable button
- Seamless 1-touch door control with Grandstream's GDS series of Facility Access devices
- HD audio on the speakerphone, handset, and headset jack
- Software and firmware updates over-the-air



MITEL 6970 IP PHONE

- 7" 800x400 Color Touch Display
- Multi-programmable personal touch keys
- Touch - 6 context-sensitive soft keys
- PoE power (802.3af)
- Bluetooth 4.1 enabled
- MobileLink enabled
- 8 beam forming microphone with 360° pickups
- Powered USB 2.0 host port (500mA)
- USB 2.0 Device port



MITEL 6940W IP PHONE

- 7" (800x480 pixel) Touchscreen LCD
- Wi-Fi –dual band 802.11 a/b/g/n
- 2 x GigE ethernet ports
- Built in Bluetooth 5.2 support
- Multi-programmable personal touch keys
- PCLink
- Full-duplex high-quality speakerphone
- Hearing aid compatible (HAC) handset
- Powered USB 2.0 Host port (500mA)
- Sidecar expansion port
- PoE Class 3 with automatic PoE Class change on Expansion Module Installation



MITEL 6930W IP PHONE

- 4.3" (480x272 pixel) color display
- Bluetooth 5.2
- MobileLink and PCLink integration
- USB mobile phone charging point
- Voice optimized handset
- Support for optional Cordless voice optimized handset
- Enhanced full-duplex speakerphone
- Programmable Personal keys
- Context Sensitive soft keys
- Highly customizable via broad array of optional add-on accessories



MITEL 6920W IP PHONE

- 3.5-inch QVGA color display: 320x240 pixel
- Crystal clear HD audio
- High quality full-duplex speakerphone
- Corded speech optimized handset
- Native DHSG/EHS analog headset support
- Mobile phone charging point
- Powered with 5.2 Bluetooth connection
- 2 Gigabit Ethernet ports with PoE Class 3



MITEL 6910 IP PHONE

- 3.4" 128x48 pixel soft white backlight display
- HD wideband audio
- 8 programmable keys
- Dual Gigabit ethernet ports
- Up to 1000 entries with company phone book
- Native EHS/DHSG and 4-pin modular headset support
- Hearing aid compatible (HAC) handset
- PoE Class 2



MITEL 6905 IP PHONE

- 2.75" 128x48 Pixel Graphical Display
- HD Wideband Audio
- 3 Programmable Keys
- Dual Ethernet Port
- Analog Handset Port
- Hearing Aid Compatible (HAC) Handset
- PoE Class 1



DA110 Dali Gateway

DA100 KNX-DALI Gateway operates between KNX and DALI bus. DALI power supply is integrated in the device. DA110 differs from DA100 by its ability to individually control each DALI load. DA110 is compliant with IEC 62386 standard.



SW104 Switch Actuator

4 independently configurable channels
Manual control for each relay on the device using slide switches
Does not require an external power supply
Electric current control can be configured



SW108 Switch Actuator

8 independently configurable channels
Manual control for each relay on the device using slide switches
Does not require an external power supply
Electric current control can be configured



IPI100 IP Interface KNXnet/IP Connections

EAE KNX IP interface supports the tunneling protocol and provides a data connection between the upper KNXnet/IP and the lower TP KNX bus line.



IPR100 IP Router

EAE KNX IP router is a tunneling and routing device. IPR100 is used as a gateway between IP and KNX bus line for commissioning and monitoring purposes. (It is also possible to simultaneously create 4 KNXnet/IP connections).
Simultaneous connection to two different KNX systems and transmission of telegrams between the local network and different buses
IP address assignment manually or by DHCP server
Option to block or allow telegrams between KNX and IP regarding configured filter table
Deactivation of filter table using on-device buttons for quick diagnosis
Functional status information with 6 LEDs on device



PS640 Power Supply Additional 30V DC Output

Input voltage range 150-275V AC, 50 60Hz
Output 1: KNX bus power with an integrated choke. (30VDC, SELV)
Output 2: Additional voltage output. (30VDC, SELV)
Short-circuit and overload protected outputs
LED indicators for Power, Overload and Reset status
On device reset with Reset Button



Rosa Metal KNX Switches

Touch operated
Brushed metal surface
Navigation LED
Feedback LEDs
In-built temperature sensor for switches
Wide range of colors
Independent programmable keys
Customize icon options
Frameless minimalist design



SERIES FS-2 VANE FLOW SWITCH

Low Cost, Field Adjustable Set Point and Paddle

The Series FS-2 Vane Flow Switches offers an economical flow proving solution. The FS-2 paddles are adjustable to fit 1 to 8" size pipe.



SERIES MSX MAGNESENSE® DIFFERENTIAL PRESSURE TRANSMITTER

Monitors Differential Pressure, Air Velocity and Volumetric Flow

The Series MSX Magnesense® Differential Pressure Transmitter combines the stability and versatility of the original Series MS2 Magnesense® II transmitter for use in building control applications. The MSX simplifies the ordering process to deliver the desired configuration, which reduces product setup time. Pressure ranges are available in Pa, mm w.c., and in w.c. All pressure ranges can be configured in unidirectional or bidirectional modes, providing a total of 32 ranges. The MSX transmitter can provide a linear pressure output or a linear velocity output with the square root extraction from the transmitter. Additional parameters have been included to expand the square root capability for calculating flow. Dual voltage and milliamp output signals can be used to provide both control and equipment output signal verification.



SERIES TE DUCT AND IMMERSION BUILDING AUTOMATION TEMPERATURE SENSOR

The Series TE Duct and Immersion Temperature Sensor can be used to monitor air or water temperature throughout a building management system or an air handler unit. Flanged duct sensors monitor the supply or return air and provide a thermistor or RTD output to the digital controller. Immersion sensors which are supplied with compression fittings are typically used to monitor the hot or chilled water lines throughout a building. Thermowells are recommended, but not required on the immersion sensors.

For variable air volume applications, the Series TE can be configured to have 8' plenum rated cable with flying leads. Standard units come with 4" leads with an integral terminal block to eliminate carrying extra wire nuts. For housing models, multiple knockouts provide easy conduit access to any side of the housing. The 1/4 turn lid comes with a chain to prevent it from being lost during installation.



SERIES TE-I IMMERSION TEMPERATURE SENSORS

The Series TE-I Immersion Style Temperature Sensors accurately measure water temperature inside chilled and hot water loops in HVAC systems. Thermowells are required to protect the electrical connection from the process water and to allow replacement of the sensors without draining the system.



SERIES 626 & 628 INDUSTRIAL PRESSURE TRANSMITTER

Complete Offering of Ranges, Connections and Outputs

The Series 626 Pressure Transmitters possess a highly precise 0.25% full scale accuracy piezo-resistive sensor contained in a compact, rugged, NEMA 4X (IP66) stainless steel general purpose housing or cast aluminum conduit housing.

The Series 628 Pressure Transmitters are ideal for OEMs with 1% full scale accuracy sensors. The corrosion resistant 316L stainless steel wetted parts allow the Series 626 and 628 transmitters to measure the pressure in a multitude of processes from hydraulic oils to chemicals. The Series 626 and 628 are available in absolute and gage pressure ranges with a variety of

- LDC support (Lens Distortion Correction)
- PoE / 12V DC, Bi-directional audio support

Honeywell

HVAC Automation



AF20-B65
Honeywell Outdoor temperature sensor, NTC

Temperature range: -40...70C
Mounting place: wall outside
Housing (HxWxD): 56mm|81mm|49mm
Wiring terminals: 2
IP class: IP65
Temperature element: NTC20k



DPS400
Honeywell Differential pressure switch for air (DPS)

Filter monitor or flow switch for air, non-combustible, non aggressive gases in air conditioning and ventilating installations.
Kind of pressure: overpressure, relative
Pressure connection: plastic connection piece for 5 mm (internal) hose
Electrical connection: AMP connector 6,3x0,8 (DIN 46244) or screw terminals
IP class: IP54



FT6960-60
Honeywell Single-stage frost protection thermostat (FT69)

Suitable for use as frost-protection thermostats for the protection of downstream air heaters in ventilation and climate control systems as well as heat exchangers in cooling systems. Can also be used to control electrical heating systems and to switch acoustic or optical alarm signals.



N0524/N1024, N05230-2POS/N10230-2POS

This non-spring return direct-coupled damper actuator provides floating and two-position control for:

- Air dampers,
- VAV units,
- Air handlers,
- Ventilation flaps,
- Louvers, and
- Reliable control for air damper applications with up to 1 m² / (5 Nm) and 2 m² (10 Nm) (seal-less damper blades; air friction-dependent)



WS9B4WB/U
Centraline Wall module for fan coil unit, on/off valve, Modbus RTU, WS9

The WS9 Series wall module is an On/Off temperature control device with an LCD display designed on the basis of the standard 86 wall-mount installation box. The unit features Modbus communications, monitor the actual room temperature and the set temperature in real time. It controls fanspeed and the opening/closing of the valve(s) in the fan coil unit.



CLNXSERIES8W02
Centraline Connected Building Management, HAWK 8000 Controller

HAWK 8000 is a powerful hardware and software platform designed to manage HVAC and non-HVAC systems (e.g. lighting, security, life safety) in a building and across multiple buildings. It therefore supports all common communication protocols, such as BACnet, LON, Modbus, M-BUS, KNX IP, Fidelio, SNMP, C-Bus and many more. HAWK 8000 allows to make use of the CentraLine Application Library, which ensures unparalleled energy efficiency as well as maximum application reliability. This ensures that International Standards like the EN 15232 are met.



Honeywell Mixed I/O Modules - CLIOP830A - CLIOP831A

The CLIOP830A and CLIOP831A mixed Panel Bus I/O modules feature 8 analog inputs, 8 analog outputs, 12 binary inputs, and 6 relay outputs. The CLIOP830A is equipped with push-in terminals, while the CLIOP831A features screw-type terminals. Both feature an integrated terminal socket and electronic module. The CLIOP830A can be equipped with up to two rows of (XS830 and/or XS831) auxiliary terminal blocks on the top and/or bottom. The CLIOP831A can be equipped with up to two rows of (XS830 and/or XS831) auxiliary terminal blocks on the top, only.



Honeywell LIOP823A - CLIOP823A
Honeywell Programmable universal HVAC controller, CentraLine LION

- Panel I/O modules, -configurable LED functions, - safety positions, - short circuit protection
- 12 binary input module for contact or totalizer contact 20 Hz

SMA TV



WISI OH 16 SC 16 ch DVB-S/S2 - QAM Transmodulator

- Reception of 16 DVB-S/S2 signals and transmodulation into 16 DVB-C channels
- DiSEqC 1.0
- Input frequency range 950–2150 MHz
- Output frequency range 47–862 MHz
- Integrated distribution matrix
- Programming and remote access via web browser
- PID filtering
- NIT and LCN generation
- Integrated FM amplifier
- 19" rack - or wall installation



VX 26 H In-House/Distribution Amplifier, Locally Supplied

The VX 26 H is a local feeding distribution amplifier with an integrated feedback channel and duplex filter. The settings can be adjusted via jumper or Q-steps and therefore an uninterrupted adjustment option is possible.

- Uninterruptible setting
- Screwed, folding housing cover
- Integrated return channel and diplexers
- All settings via exact switching step (Q-step) or jumper
- Output splitter (jumper)
- Lightning protection HF- connections 4 kV



VX 29 H In-House Distribution Amplifier, Remote Powered

Broadband distribution amplifier with remote feeding for use in coaxial networks.

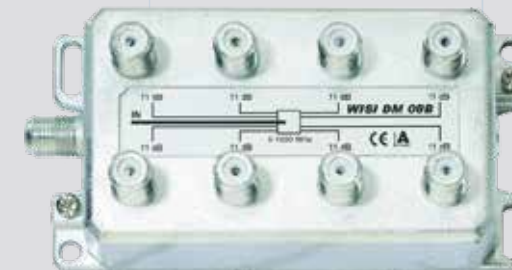
- Uninterruptible setting
- Screwed, folding housing cover
- Integrated return channel and diplexers
- All settings via exact switching step (Q-step) or jumper
- Output splitter (jumper)
- Lightning protection HF- connections 4 kV
- CSO >65 dB
- CTB >60 dB



DM 02 B Splitter, 2-way

The DM 02 B is a double distributor which enables the symmetrical division of cable signals on 2 lines. The distribution attenuation is 3.7 dB. High shielding properties (class A) guarantee an interference-free transmission of the signals in the input and distribution systems. A fast and safe connection is ensured through F-sockets.

- Frequency range 5...1000 MHz
- Screening factor according to Class A
- High port isolation and return loss



DM 08 B Splitter, 8-way

The DM 08 B is a 8-way distributor which enables the symmetrical division of cable signals on 8 lines. The distribution attenuation is 11 dB. High shielding properties (class A) guarantee an interference-free transmission of the signals in the input and distribution systems. A fast and safe connection is ensured through F-sockets.

- Frequency range 5...1000 MHz
- Screening factor according to Class A
- High port isolation and return loss



DV 14 N F-Compression-Plug with NiTin-Coating

The DV 14 N is an F-technology compression plug with a NiTin-coat for the cable type MK 15.

- Suitable for MK 15
- F compression plug for coaxial cable with 10...10,4 mm outer diameter
- NiTin-coating



DV 15 F-Compress Plug

The DV 15 is a compression plug in F-technology for the cable types MK 86 B, MK 91 and 96.

- Suitable for MK 91, MK 96, MK 99, MK 86 B
- F-compression plug for coaxial cable with 6.5...7 mm outer diameter
- NiTin-coating

Professional Audio - Video Automation and Broadcast Product Sales & Supervision Services



The brands we work with;



In many areas such as congress centers, conference halls, theater and opera halls, hospitals, hotels, business towers, private and official residences, presidential palaces and residences; we offer various product supply and supervision services.

- Professional Sound Systems
- Professional Image Systems
- LED Display Screen Applications
- Chairman-Delegate Conference Systems
- Broadcast (Live Broadcasting) Systems
- Meeting Room Audio and Video System Solutions
- Smart Classroom Solutions
- Hybrid Class Solutions



ATEO Series



ATEO2S
2" ATEO2 with surface ceiling mount

Power (8Ω - Program)
20W
SPL (Max. W/1m)
93db
Frequency (-10 dB)
100 Hz – 20 kHz



ATEO2 CleverMount™
2" Compact Wall Speaker

Power (8Ω - Program)
20W
SPL (Max. W/1m)
93db
Frequency (-10 dB)
100 Hz – 20 kHz



ATEO4 CleverMount™
4" Wall Speaker

Power (8Ω - Program)
70W
Power (100V)
24W - 12W - 6W
Power (70V)
24W - 12W - 6W - 3W
SPL (Max. W/1m)
101db
Frequency (-10 dB)
65 Hz – 20 kHz



ATEO6 CleverMount™
6" Wall Speaker

Power (8Ω - Program)
120W
Power (100V)
50W - 25W - 12.5W
Power (70V)
50W - 25W - 12.5W - 6.25W
SPL (Max. W/1m)
106db
Frequency (-10 dB)
55 Hz – 20 kHz

XENO Series



XENO6
6" Full Range Speaker

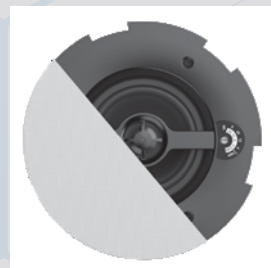
Power (8Ω - Program)
160W
SPL (Max. W/1m)
110db
Frequency (-10 dB)
55 Hz – 20 kHz



XENO8
8" Full Range Speaker

Power (8Ω - Program)
240W
SPL (Max. W/1m)
110db
Frequency (-10 dB)
50 Hz – 20 kHz

CALI Series



CALI424 Safelatch™
4" Ceiling Speaker

Twist-Fix™ ızgara
Power (8Ω - Program)
60W
Power (100V)
24W - 12W - 6W
Power (70V)
24W - 12W - 6W - 3W
Frequency (-10 dB)
70 Hz – 20 kHz



CALI660 Safelatch™
6.5" Ceiling Speaker

Twist-Fix™ ızgara
Power (8Ω - Program)
120W
Power (100V)
60W - 30W - 15W
Power (70V)
60W - 30W - 15W - 7.5W
Frequency (-10 dB)
65 Hz – 20 kHz

CELO Series



CELO2
2" Ceiling Speaker

Paintable 1mm SlimLine™
Magnetic Grill Design

Power (8Ω - Program)
20W
Frequency (-10 dB)
100 Hz – 20 kHz



CELO6
6" Ceiling Speaker

Paintable 1mm SlimLine™
Magnetic Grill Design

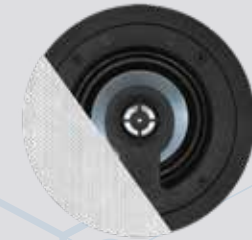
Power (8Ω - Program)
120W
Frequency (-10 dB)
44 Hz – 20 kHz



CELO8S
8" Ceiling Subwoofer

Paintable 1mm SlimLine™
Magnetic Grill Design

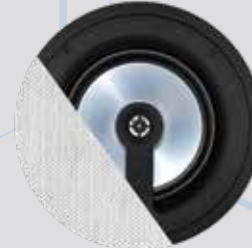
Power (8Ω - Program)
2x100W
Frequency (-10 dB)
32 Hz – 200 Hz



CELO5
5" Ceiling Speaker

Paintable 1mm SlimLine™
Magnetic Grill Design

Power (8Ω - Program)
100W
Frequency (-10 dB)
55 Hz – 20 kHz



CELO8
8" Ceiling Speaker

Paintable 1mm SlimLine™
Magnetic Grill Design

Power (8Ω - Program)
160W
Frequency (-10 dB)
32 Hz – 20 kHz

MTX Series



MTX48
4-Zone Audio Matrix



MTX88
8-Zone Audio Matrix



SMA Series



SMA350
2 x 350W(4Ω)



SMA500
2 x 500W(4Ω)



SMA750
2 x 750W(4Ω)



Features;

- Compatible with AUDAC Touch™
- RS232 & TCP/IP control port
- 4 unbalanced stereo line inputs
- Wall panel inputs
- 2 x Microphone input
- 24 Volts emergency power operation
- Front PFL speaker with vol. control
- Priority audio inputs with phantom power
- 1 x priority mute contact



MWX45
Wall Panel



MWX65
All-In-One Wall Panel

Features;

- WaveDynamics™ dual channel amplifiers
- Lightweight class-D amplifier
- Speakon compatible & terminal block output connections
- RS232 control
- Dante™/AES67 expansion port
- XLR & terminal block input & linkthrough connections
- Advanced DSP and loudspeaker management
- 2.5" LCD display with intuitive user interface
- WaveDynamics™ speaker & set configurations

SMQ Series



SMQ350
4 x 350W(4Ω)



SMQ500
4 x 500W(4Ω)



SMQ750
4 x 750W(4Ω)



PMQ Series



PMQ240
100V/70V 4x240W



PMQ480
100V/70V 4x480W



Features;

- WaveDynamics™ 4 kanallı güç amplifikatörleri
- Lightweight class-D amplifier
- Speakon compatible & terminal block output connections
- RS232 control
- Dante™/AES67 expansion port
- XLR & terminal block input & linkthrough connections
- Advanced DSP and loudspeaker management
- 2.5" LCD display with intuitive user interface
- WaveDynamics™ speaker & set configurations



SMQ1250
4 x 1250W(4Ω)



Features;

- WaveDynamics™ 4 kanallı 100V/70V Amplifikatörler
- Lightweight class-D amplifier
- XLR input & linkthrough connections
- Terminal block output connections
- RS232 control
- Dante™/AES67 expansion port
- Advanced DSP and loudspeaker management
- 2.5" LCD display with intuitive user interface
- WaveDynamics™ speaker & set configurations



PMQ600
100V/70V 4x600W





x32 Compact - Digital Mixing Console



- Compact 40-input channel, 25-bus digital mixing console for Studio and Live application
- 16 Midas-designed, fully programmable mic preamps for audiophile sound quality
- 17 Fully automated motorized 100 mm faders allow for instant overview, powerful scene management and DAW control
- 8 XLR outputs plus 6 additional line in/outputs, 2 phones connectors and a talkback section with integrated or external mic
- Individual and dynamic LCD Scribble Strips on all channels and buses creating easy assignment and intuitive channel distinction
- 32 x 32 channel USB 2.0 audio interface, with DAW remote control emulating HUI* and Mackie Control*
- iPad* and iPhone* apps for professional remote operation available free of charge?no host PC required

- High-resolution 7" day-viewable Color TFT for easy viewing of workflow components and parameters
- Main LCR, 6 matrix buses and all 16 mix buses each featuring inserts, 6-band parametric EQ's and full dynamics processing, plus 8 DCA and 6 mute groups
- Virtual FX rack featuring 8 true-stereo FX slots include high-end simulations such as Lexicon 480L* and PCM70*, EMT250* and Quantec QRS* etc.
- 40-Bit floating-point DSP features "unlimited" dynamic range with no internal overload and near-zero overall latency (0.8 msec)
- Powerful scene management for convenient handling of complex productions
- 48-channel Digital Snake ready* via dual AES50 ports, featuring Klark Teknik's SuperMAC networking capability for ultra-low jitter and latency
- USB type-A connector providing file storage and uncompressed stereo recordings plus show presets and system updates
- Dedicated and easy-to-use channel strip section with direct access controls and graphic user interface for intuitive workflow
- Additional user-definable control section allows to set up short-cuts to your favorite views or parameters
- ULTRANET connectivity for Behringer's P-16 Personal Monitoring System* plus AES/EBU stereo digital output and MIDI
- Networked remote control for show setups with on-screen software editor via Ethernet
- Built-in expansion port for audio interface cards or digital networking bridges
- Future firmware updates, incl. new FX ?Plug Ins?, downloadable from behringer.com free of charge

1C-BK Ultra-Compact, 100 Watt, 5" Monitor Speakers



- Multi-purpose 2-way studio monitors ideally suited for fixed installation, multimedia, home recording studio, audio/video production and surround-sound systems
- High power handling capability produces full-range output with extremely low distortion
- Powerful 5 1/2" woofer with extremely light-weight cellulose cone and high-resolution 1/2" tweeter
- Ultra-linear frequency range from 60 Hz to 23 kHz
- Phase-optimized and high-precision crossover for absolute phase linearity
- Auto-overload protection prevents tweeter damage and resets automatically
- Bracket for wall/ceiling mounting included

C200 - 200 Watt Powered Column Loudspeaker with an 8" Subwoofer



- Modular column loudspeaker for portable PA applications and high quality music playback
- Extremely wide sound dispersion provides consistent sound to the audience and performers
- 200 Watt power with multi-channel Class-D technology
- High quality Bluetooth* audio streaming
- MP3 player included to play audio files via USB sticks and SD/MMC cards
- LED lighting creates club-style atmosphere
- Comprehensive remote control included for ultimate flexibility
- 3 channel mixer with individual gain controls
- Studio-grade echo adds finishing touch to your sound
- Intuitive user control interface with LCD display for ease of navigation
- 8" high excursion low frequency driver for strong sub-bass response
- 4 x 2.5" drivers with edge wound copper voice coils for extended high frequency reproduction
- Precision-lock system eliminates speaker cables and stands
- High impact and lightweight enclosure
- Integrated protective perforated steel mesh grilles
- Integral ergonomic carrying handle for ease of portability



NX3000 - Ultra-Lightweight 3000 Watt Class-D Power Amplifier



- 2 x 1500W @20hm, 2 x 900W @4Ohm
- Bridge mode; 3000W @4Ohm
- Ultimate reliability through revolutionary cool-running High-Density Class-D technology with "near-zero" thermal buildup
- Ultra-efficient switch-mode power supply for noise-free audio, superior transient response and low power consumption
- Built-in stereo crossover with low-cut, high-cut and full range mode
- SmartSense Loudspeaker impedance compensation features fully linear frequency response at any speaker load impedance
- Zero-Attack" limiters offer maximum output level with reliable overload protection- Hassas seviye ayarı için kilitli kazanç kontrolleri
- Precise 4-segment Signal and Limit LEDs to monitor performance
- XLR and 1/4" TRS combination input connectors for compatibility with any source
- Independent DC, LF and thermal overload protection on each channel automatically protects amplifier and speakers without shutting down the show

EP4000 - Professional 4,000-Watt Stereo Power Amplifier



- 2 x 2.000W @20hm, 2 x 1400W @4Ohm
- Bridge mode; 4000W @4Ohm
- ATR (Accelerated Transient Response) technology for ultimate punch and clarity
- Switchable limiters offer maximum output level with reliable overload protection
- Detented gain controls for precise setting and matching of sensitivity
- Precise Power, Signal and Clip LEDs to monitor performance
- XLR and 1/4" TRS input connectors for compatibility with any source
- Professional speaker connectors and "touch-proof" binding posts support most speaker wiring systems
- Selectable low-frequency filters remove damaging infra-sound frequencies
- Independent DC and thermal overload protection on each channel automatically protects amplifier and speakers
- High-current toroidal transformer for ultra-high transient response and absolute reliability
- "Back-to-front" ventilation system including air filter for reliable operation
- "Built-like-a-tank," impact-resistant, all-steel 2U rackmount chassis

Extron

IPCP Series



IPCP Pro 250
IP Link Pro Control Processor

- Key Features**
- Supports TouchLink Pro touchpanels, eBUS® button panels, and Network Button Panels
 - Supports secure industry standard communications protocols
 - Supports LinkLicense®
 - One bidirectional RS-232 serial port with software handshaking
 - One bidirectional RS-232/RS-422/RS-485 serial port with hardware and software handshaking
 - One IR/Serial port for one-way control of external devices



IPCP Pro 350
IP Link Pro Control Processor

- Key Features**
- Supports TouchLink Pro touchpanels, eBUS® button panels, and Network Button Panels
 - Supports secure industry standard communications protocols
 - Supports LinkLicense®
 - Two bidirectional RS-232 serial ports with software handshaking
 - One bidirectional RS-232/RS-422/RS-485 serial port with hardware and software handshaking
 - Two IR/Serial ports for one-way control of external devices



IPCP Pro 550
IP Link Pro Control Processor

- Key Features**
- Supports TouchLink Pro touchpanels, eBUS® button panels, and Network Button Panels
 - Supports secure industry standard communications protocols
 - Supports LinkLicense®
 - Six bidirectional RS-232 serial ports with software handshaking
 - Two bidirectional RS-232/RS-422/RS-485 serial ports with hardware and software handshaking
 - Eight IR/Serial ports for one-way control of external devices

TLP Pro Series



TLP Pro 725M/725T
7" Wall Mount/Tabletop TouchLink Pro Touchpanel

- Key Features**
- 7" capacitive touchscreen with 1024x600 resolution and 24-bit color depth
 - Gorilla Glass® screen is tough, scratch and smudge-resistant
 - Faster, quad-core processing and eight times more memory
 - Can be mounted in a two-gang junction box, or on a wall, lectern, or any flat surface, including glass (TLP Pro 725M)
 - Can be placed on tables (TLP Pro 725T)
 - Works with any Extron control processor and HC 400 Series system
 - Transform your touchpanel into an all-in-one control system using LinkLicense for TLP Control Processor and the TLCA 1 TouchLink Control Port Expansion Adapter
 - Power over Ethernet provides power and communication over a single Ethernet cable

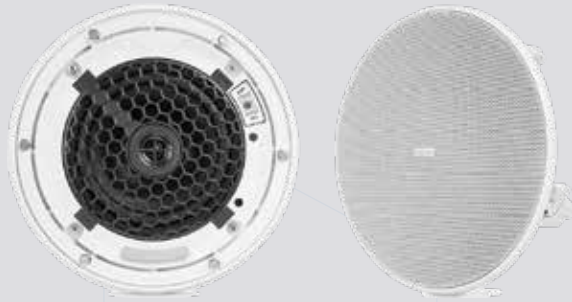


TLP Pro 1025M/1025T
10" Wall Mount/Tabletop Touchlink Pro Touchpanel

- Key Features**
- 10" capacitive touchscreen with 1280x800 resolution and 24-bit color depth
 - Gorilla Glass® screen is tough, scratch and smudge-resistant
 - Faster, quad-core processing and eight times more memory
 - Can be mounted in a two-gang junction box, or on a wall, lectern, or any flat surface, including glass (TLP Pro 1025M)
 - Can be placed on tables (TLP Pro 1025T)
 - Works with any Extron control processor and HC 400 Series system
 - Transform your touchpanel into an all-in-one control system using LinkLicense for TLP Control Processor and the TLCA 1 TouchLink Control Port Expansion Adapter
 - Power over Ethernet provides power and communication over a single Ethernet cable



CS 26T Plus



Two-Way Open Back Ceiling Speakers with 70/100 V Transformer

Frequency	42 Hz to 20 kHz, -10 dB
Power (8Ohm)	120 W (rms) continuous
Nominal sensitivity	86 dB SPL, 1 W @ 1 m
Nominal impedance	8 ohms per speaker
Crossover frequency	2.5 kHz
Nominal coverage angle	112° conical coverage
70 V Power	32W, 16W, 8W, 4W, 2W
100 V Power	32W, 16W, 8W, 4W

SM 28



SpeedMount Two-Way Surface Mount Speakers with 8" Woofer

Frequency	59 Hz to 22 kHz, -10 dB
Power(8Ohm)	180 W (rms) continuous
Maximum SPL	108 dB, 1 m (based on MIV)
Nominal sensitivity	87 dB SPL, 1 W, 1 m,
Nominal coverage angles	Horizontal: 105° Vertical: 60°
Crossover frequency	2.0 kHz

DXP HD 4K Plus Series



DXP 42 HD 4K PLUS



DXP 44 HD 4K PLUS



DXP 84 HD 4K PLUS



DXP 88 HD 4K PLUS



DXP 168 HD 4K PLUS



DXP 1616 HD 4K PLUS

4K/60 HDMI Matrix Switchers with Audio De-Embedding

Key Features

- Available in fixed I/O sizes from 4x2 to 16x16
- Supports computer and video resolutions up to 4K/60 @ 4:4:4
- Supported HDMI 2.0 specification features include data rates up to 18 Gbps, HDR, Deep Color up to 12 bit, 3D, HD lossless audio formats, and CEC control
- HDMI audio de embedding with digital S/PDIF and analog stereo audio outputs
- CEC – Consumer Electronics Control capability
- Output volume control

XTRA Series



XPA2001

Mono 70/100 V Amplifier - 200 Watts

Key Features

- 200 watts rms output power:
 - XPA 2001-70V - 1x200W @70V
 - XPA 2001-100V - 1x200W @100V
- ENERGY STAR® qualified amplifier
- Professional grade signal-to-noise and THD+N performance
- Extron Patented CDRS™ - Class D Ripple Suppression
- Convection cooled, fanless operation
- Ultra low inrush current - no need for power sequencing



XPA1002

Two Channel Low and High Impedance Amplifiers – 100 Watts Per Channel

Key Features

- 200 watts rms output power:
 - XPA1002 - 2x60W @8Ohm, 2x100W @4Ohm
 - XPA 1002 Plus - 2x100W @8Ohm&4Ohm
 - XPA1002-70V - 2x100 watt @70V
 - XPA1002-100V - 2x100 watt @ 100V
- ENERGY STAR® qualified amplifier
- Professional grade signal-to-noise and THD+N performance
- Extron Patented CDRS™ - Class D Ripple Suppression
- Convection cooled, fanless operation
- Ultra low inrush current - no need for power sequencing



XPA4002

Two Channel Amplifier - 400 Watts Per Channel

Ana Özellikler

- 800 watts rms output power:
 - XPA4002 - 2x400W @4Ohm, 2x200W @8Ohm
 - XPA4002 - 70V - 2x400W @70V
- ENERGY STAR® qualified amplifier
- Professional grade signal-to-noise and THD+N performance
- Extron Patented CDRS™ - Class D Ripple Suppression
- Convection cooled, fanless operation
- Ultra low inrush current - no need for power sequencing



XPA2004

Four Channel Amplifier - 200 Watts Per Channel

Ana Özellikler

- 800 watts rms output power:
 - 4x200W @4Ohm, 4x100W @8Ohm
- ENERGY STAR® qualified amplifier
- Professional grade signal-to-noise and THD+N performance
- Extron Patented CDRS™ - Class D Ripple Suppression
- Convection cooled, fanless operation
- Ultra low inrush current - no need for power sequencing

XTP Matrix Switchers



XTP II CrossPoint 1600/3200/6400

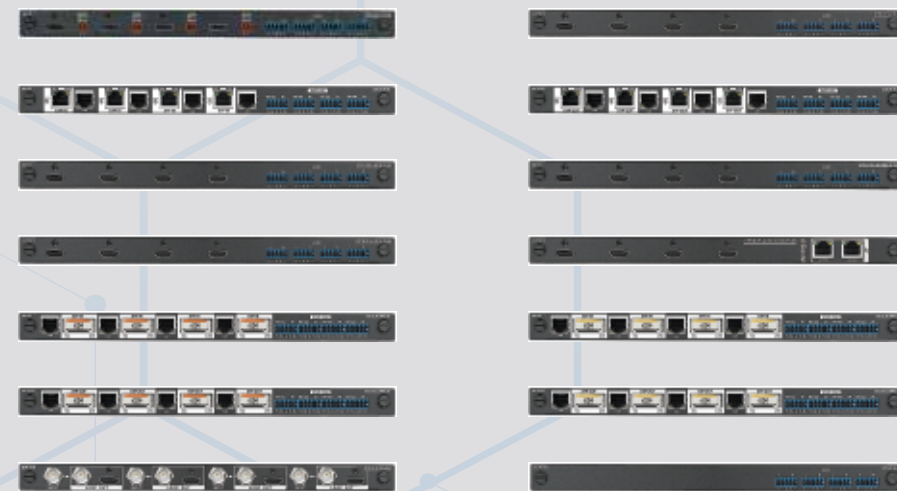
Modular Digital Matrix Switchers from 4x4 to 64x64 with Speed-Switch Technology

Ana Özellikler

- 50 Gbps digital backplane supports an 8K future
- WindowWall® Mode supports videowall applications
- Wide selection of local, twisted pair, and fiber optic input and output matrix boards
- RS 232 insertion from the Ethernet control port
- Remote power to XTP twisted pair transmitters and receivers
- Audio breakaway

Usable Boards;

- XTP II CP HD 8K I/O Boards
- XTP CP 4i 12G-SDI Boards
- XTP CP 4K I/O Boards
- XTP II CP HD 4K PLUS I/O Boards
- XTP CP Fiber 4K I/O Boards
- XTP CP 4o SA Board
- XTP Matrix Blank Plate



HDMI - 230 Series Transmitters/Receivers



DTP T HWP 4K 231 D
Wall Type
DTP Transmitter HDMI



DTP R HWP 4K 231 D
Wall Type
DTP Receiver HDMI



DTP T UWP 4K 232 D
Wall Type
DTP Transmitter HDMI/VGA + Audio

DTP HDMI 4K 230 Tx / Rx DTP Transmitters/ Receivers for HDMI Ana Özellikler

- Transmits HDMI plus control and analog audio up to 230 feet (70 meters) over a shielded CATx cable
- Supports computer and video resolutions up to 4K
- Supported HDMI specification features include data rates up to 10.2 Gbps, Deep Color up to 12-bit, 3D, HD lossless audio formats, and CEC pass-through
- HDCP 2.3 compliant
- Extron XTP DTP 24 shielded twisted pair cable is strongly recommended for optimal performance

DTP2 Transmitters/Receivers



- DTP2 T 211 - 4K/60 HDMI DTP2 Transmitter with Audio Embedding
- DTP2 R 211 - 4K/60 HDMI DTP2 Receiver with Audio De-Embedding
- DTP2 T 201 D - 4K/60 HDMI DTP2 Transmitter - Wallplate

Key Features

- Transmits HDMI plus control and analog audio up to 330 feet (100 meters) over a shielded CATx cable
- Supports computer and video resolutions up to 4K/60 @ 4:4:4
- Analog stereo audio embedding
- Supported HDMI 2.0 specification features include data rates up to 18 Gbps, 3D, HD lossless audio formats, and CEC pass-through
- Remote power capability with DTP2 products
- Accepts additional analog stereo audio signals

DTP3 Transmitters/Receivers



DTP3 T 202 - 4K/60 HDMI DTP3 Transmitter with Input Loop-Through
DTP3 R 201 - 4K/60 HDMI DTP3 Receiver with Audio De-Embedding

Key Features

- Transmits HDMI plus control up to 330' (100 m) over a shielded CAT6A cable
- Supports computer and video resolutions up to 4K/60 @ 4:4:4
- Buffered HDMI input loop-through
- EDID Minder® automatically manages EDID communication between connected devices
- HDCP 2.3 compliant
- Supported HDMI 2.0b specification features include data rates up to 18 Gbps, HDR, Deep Color up to 12 bit, 3D, HD lossless audio formats, and CEC pass-through



NAV Pro AV over IP



NAVIGATOR
Pro AV over IP System Manager

Key Features

- Securely manages, configures, and controls NAV® Pro AV over IP systems
- Each unit supports up to 240 NAV endpoints
- Intuitive, web-based user interface for ease of use
- Manages simultaneous configuration of multiple NAV devices
- Secure encrypted communication between all endpoints



NAV E 101
1G Pro AV over IP Encoder - HDMI

Key Features

- Encodes and streams video and audio over 1 Gbps Ethernet networks
- Supports HDMI 2.0 at resolutions up to 4K/60 @ 4:4:4
- PURE3® Codec
- PURE3 Intelligent Selective Streaming
- Interoperable with 10 Gbps NAV® endpoints
- Ultra-low latency with high quality video



NAV E 201 D
1G Pro AV over IP Encoder - HDMI - Decorator-Style Wallplate

Key Features

- Decorator-style wallplate design
- Encodes and streams video and audio over 1 Gbps Ethernet networks
- Supports HDMI 2.0 at resolutions up to 4K/60 @ 4:4:4
- PURE3® Codec
- PURE3 Intelligent Selective Streaming
- Interoperable with 10 Gbps NAV® endpoints



NAV SD 101
1G Pro AV over IP Scaling Decoder - HDMI

Key Features

- NAV Pro AV over IP Workstation
- SmartGlide™ KVM Switching
- SmartGlide™ KVM Focus
- Decodes video and audio from 1 Gbps Ethernet networks
- Supports HDMI 2.0 at resolutions up to 4K/60 @ 4:4:4
- PURE3® Codec



BLU-100
12x8 Signal Processor with BLU link

Features

- 12 Analog Inputs (with 48v Phantom Power per Channel)
- 8 Analog Outputs
- Configurable Signal Processing
- Rich Palette of Processing and Logic Objects
- 48 Channel, Low Latency, Fault Tolerant Digital Audio Bus
- Clear Front Panel LED Indication
- Bi-Directional Locate Functionality
- 12 Control Inputs and 6 Logic Outputs for GPIO Integration
- Soundweb London Interface Kit for Third Party Control System Integration
- Configuration, Control and Monitoring from HiQnet Audio Architect

BLU-800
Signal Processor with BLU link and CobraNet™

Features

- Four Input / Output Card Slots
- Configurable Inputs / Outputs
- Analog Inputs (with Phantom Power per Channel)
- Analog Outputs
- Digital Inputs (AES/EBU and S/PDIF)
- Digital Outputs (AES/EBU and S/PDIF)
- AEC Inputs (with Phantom Power per Channel)
- Telephone Hybrid Card
- Configurable Signal Processing
- Rich Palette of Processing and Logic Objects
- CobraNet Audio
- 256 Channel, Low Latency, Fault Tolerant Digital Audio Bus
- Clear Front Panel LED Indication
- Informative Front Panel Display
- Bi-Directional Locate Functionality
- 12 Control Inputs and 6 Logic Outputs for GPIO Integration
- Soundweb London Interface Kit for Third Party Control System Integration
- Configuration, Control and Monitoring from HiQnet Audio Architect

EC-4BV
Ethernet Controller with 4 Buttons and Volume Control

Features

- Compatible with BSS Audio Soundweb London, Crown DCi, and other HiQnet devices
- Available in Black or White
- PoE (Power Over Ethernet)
- Configured within Audio Architect via Drag-and-Drop
- 1 Programmable Push/Rotary Encoder (Multicolored)
- 4 Programmable Buttons (Multicolored)
- 1 Programmable 64x128 Pixel LCD (Multicolored)



BLU-BIB
(Break-In Box) Input Expander

Features

- 8 Analog Audio Inputs
- Standard Terminal Block Connectors for Analog Audio Connections
- DIP Switches for Channel Range Selection
- Front Panel Input Gain and Phantom Power Control
- Front Panel Lockout for Tamper-Free Operation
- 256 Channel, Low Latency, Fault Tolerant Digital Audio Bus
- Clear Front Panel LED Indication
- 12VDC External Power included
- Half Rack Width, Desk Mount or Wall Mount Chassis (BLU-BOB1)
- 1U Rack-Mount Kit available separately



BLU-BOB1
(Break-Out Box) Output Expander

Features

- 8 Analog Audio Outputs
- Standard Terminal Block Connectors for Analog Audio Connections
- DIP Switches for Channel Range Selection
- 256 Channel, Low Latency, Fault Tolerant Digital Audio Bus
- Clear Front Panel LED Indication
- 12VDC External Power included
- Terminal Block Connectors for Power Connection
- Half Rack Width, Desk Mount or Wall Mount Chassis



EC-8BV
Ethernet Controller with 8 Buttons and Volume Control

Features

- Compatible with BSS Audio Soundweb London, Crown DCi, and other HiQnet devices
- Available in Black or White
- PoE (Power Over Ethernet)
- Configured within Audio Architect via Drag-and-Drop
- 1 Programmable Push/Rotary Encoder (Multicolored)
- 8 Programmable Buttons (Multicolored)
- 2 Programmable 64x128 Pixel LCDs (Multicolored)



I-Tech HD Series



MODEL	CHANNELS	2Ω	2.7Ω	4Ω	8Ω	4Ω Bridged	8Ω Bridged
5000HD	2	2000W	2800W	2500W	1250W	4000W	5000W
9000HD	2	2800W	4200W	3500W	1500W	5600W	7000W
12000HD	2	3750W	5400W	4500W	2100W	7500W	9000W
4x3500HD	4	3500W	3800W	4000W	2100W	6000W	7000W

CDi Series



MODEL	CHANNELS	2Ω DUAL	4Ω DUAL	8Ω DUAL	70Vrms DUAL
1000	2	700W	500W	275W	500W
2000	2	1000W	800W	475W	800W
4000	2	1600W	1200W	650W	1000W
6000	2	3000W	2100W	1200W	2500W

DriveCore Install Network Series



MODEL	CHANNELS	2Ω	4Ω	8Ω	16Ω	70Vrms	100Vrms
2 300N	2	150W	300W	300W	150W	300W	300W
4 300N	4	150W	300W	300W	150W	300W	300W
8 300N	8	150W	300W	300W	150W	300W	300W
2 600N	2	300W	600W	600W	300W	600W	600W
4 600N	4	300W	600W	600W	300W	600W	600W
8 600N	8	300W	600W	600W	300W	600W	600W
2 1250N	2	1250W	1250W	1250W	625W	1250W	1250W
4 1250N	4	1250W	1250W	1250W	625W	1250W	1250W
2 2400N	2	2100W	2400W	1900W	950W	2100W	2300W
4 2400N	4	2100W	2400W	1900W	950W	2100W	2300W

XLS DriveCore 2 Series



MODEL	CHANNELS	2Ω DUAL	4Ω DUAL	8Ω DUAL	4Ω Bridged	8Ω Bridged
1002	2	550W	350W	215W	1100W	700W
1502	2	775W	525W	300W	1550W	1050W
2002	2	1050W	650W	375W	2100W	1300W
2502	2	1200W	775W	440W	2400W	1550W



VRX900 Series



VRX928LA
8" Two-Way Line Array (White/Black)

Power Rating	400 W / 800 W / 1600W
Frequency Range (-10dB)	70 Hz - 20 kHz
Coverage Pattern	100 x 15 nominal
Frequency Response	85 Hz - 19 Hz (± 3 dB)
Crossover Modes	Bi-amp / passive,
Crossover Frequency	2.0 kHz
Maximum SPL (1m)	122 dB SPL peak (passive mode) LF: 122 dB (bi-amp mode) HF: 128 dB (bi-amp mode)



VRX932LA-1
12" Two-Way Line Array (White/Black)

Power Rating	800 W / 1600 W / 3200 W
Frequency Range (-10dB)	57 Hz - 20 kHz
Coverage Pattern	100 x 15 nominal
Crossover Modes	Bi-amp / passive
Crossover Frequency	132 dB SPL peak 1.2 kHz
Maximum SPL (1m)	130 dB SPL peak (passive mode) LF: 130 dB HF: 139 Db



VRX932LAP
12" Two-Way Self-Powered Line Array

Power Rating	1750W Peak / 875W Continuous
Frequency Range (-10dB)	57 Hz - 20 kHz
Maximum SPL (1m)	136 dB SPL
Coverage Pattern	100 x 15 nominal



VRX915S
15" Bass Reflex Subwoofer (White/Black)

Power Rating	800 W / 1600 W / 3200 W
Frequency Range (-10dB)	35 Hz - 250 Hz
System Maximum SPL	126 dB SPL



VRX918S
18" High Power Flying Subwoofer (White/Black)

Power Rating	800 W / 1600 W / 3200 W
Frequency Range (-10dB)	31 Hz - 220 Hz
System Maximum SPL	130 dB SPL



VRX918SP
18" High Power Self-Powered Flying Subwoofer

Power Rating	1500 Watts Peak LF: Dual-Bridged Technology™ Class D
Frequency Range (-10dB)	31 Hz - 220 Hz
Maximum Peak Output	126 dB SPL at 1m



VRX915M
15" Two-Way Stage Monitor

Power Rating	800 W / 1600 W / 3200W
Frequency Range (-10dB)	60 Hz - 20 kHz
Coverage Pattern (-6 dB)	50° x 90° nominal
Crossover Modes	Passive / Bi-amp
Crossover Frequency	1.1 kHz
Maximum SPL (1m)	127 dB SPL continuous 133 dB SPL peak

CONTROL Series - Ceiling Type



Control 24CT
Background/ Foreground Ceiling Loudspeakers

Frequency Range 80 Hz - 20 kHz
Power Rating 70V: 30W, 15W, 7.5W (& 3.7W @ 70V)
Coverage Angle 130° conical
Directivity Index (DI) 3.8 dB averaged 500 Hz to 4 kHz
Maximum SPL (1m) 102 dB (top 70V/100V tap)



Control 26CT
6.5" Ceiling Loudspeaker Transducer Assembly

Frequency Range 75 Hz - 20 kHz
Power Rating 60W, 30W, 15W (& 7.5W @ 70V)
Coverage Angle 110° conical
Directivity Index (DI) 4.6 dB
Maximum SPL (1m) 107 dB (top 70V/100V tap)



Control 19CST
In-Ceiling Subwoofer

Frequency Range 42 Hz - 200 Hz
Power Rating 75W, 30W, 15W (& 7.5W @ 70V)
Coverage Angle 180° conical
Maximum SPL (1m) 108 dB (70V/100V, center of ceiling)
114 dB (70V/100V, near corner)

CONTROL Series - Wall Type



Control 25AV
Indoor Outdoor Background Foreground Loudspeaker

Frequency Range 70 Hz - 23 kHz (-10 dB)
Power Capacity 200 W Continuous Program Power
100 W Continuous Pink Noise
Transformer Taps 70V: 60 W, 30 W, 15 W, 7.5 W
100V: 60 W, 30 W, 15 W
Maximum SPL (1m) 113 dB continuous peak pink noise
107 dB continuous average pink noise
Coverage Angle 100° x 100°



Control 29AV-1
Premium Indoor / Outdoor Monitor Speaker

Frequency Range 37 Hz -18 kHz (-10 dB)
Power Capacity 300 W Continuous Program Power;
150 W Continuous Pink Noise
Transformer Taps 70 V: 110 W, 55 W, 28 W, 14 W
100 V: 110 W, 55 W, & 28 W,
Thru Position: 8 ohms nominal
Maximum SPL (1m) Short-Term: 120 dB; Long-Term: 114 dB
Coverage Angle 110° H x 85° V, rotatable

CONTROL Series - Pendant Type



Control 64P/T
Compact Full-Range Pendant Loudspeaker

Frequency Range 65 Hz - 15 kHz(-10dB)
Power Rating 100 W Continuous Program (2 hrs)
50 W (200W peak), Continuous Pink Noise (2 hrs)
40 W (160W peak) Continuous Pink Noise (100 hrs)
Transformer Taps 70V: 30W, 15W, 7.5W, 3.7W
100V: 30W, 15W, 7.5W
Nominal Sensitivity 88 dB Nominal
Coverage Angle 120° (averaged 1 kHz to 4 kHz)
Directivity Factor (Q) 6.2
Directivity Index (DI) 7.3dB (averaged 1kHz - 16kHz)
Maximum SPL (1m) 105 dB continuous pink noise
111 dB peak



Control 60PS/T
Pendant Subwoofer with Crossover

Frequency Range 42 Hz - 350 Hz(-10dB)
Power Rating 300 Watts Continuous Program Power, 100 hrs
150 Watts Continuous Pink Noise, 100 hrs
Transformer Taps 70V: 110W, 55W, 30W, 15W
100V: 110W, 55W, 30W
Nominal Sensitivity 88 dB (2.83V/1m)
Maximum SPL (1m) 107 dB @ 1 m (3.3 ft) average, 113 dB peak

Soundcraft®
by HARMAN



Si Impact
80-input Digital Mixing Console and 32-in/32-out USB Interface and iPad Control

Features

- Up to 80 channels to mix
- 32 Mic Inputs
- 8 XLR/1/4" Combi-jacks for line inputs and instruments
- 40 DSP input channels (32 mono inputs and 4 stereo channels/returns)
- 31 Output busses (All with full DSP processing and GEQ)
- 4-band Fully Parametric EQ on each channel and bus
- 8 VCAs + 8 Mute groups
- 26 motorised faders (24 input + LR/Mono)
- 4 fully customisable Fader Layers
- Built-in Stagebox Connectivity
- 5" touchscreen display
- Multi-Colour LCD Channel Displays on each input fader
- 4 studio-grade Lexicon Effects engines and dedicated FX busses
- BSS Graphic Equalisers on every bus
- 20 sub-group / aux busses
- 4 mono/stereo matrix busses
- 32x32 USB audio interface for multi-track recording and playback *
- Increase I/O capabilities with option cards and stageboxes

EPM6/EPM8/EPM12
Low-cost high-performance mixers

Features

- 2 configurable auxiliary buses
- XLR-type and 1/4" metal jack connector sockets
- RCA phono stereo playback inputs and record outputs
- 3-band EQ with a swept mid on mono inputs
- 2-band EQ on stereo inputs
- TRS insert sockets and inserts on all mono inputs and mix output
- Ten-segment LED output metering
- Intuitive and comprehensive solo system
- Headphone output
- Easily rack mountable



Vi3000
Digital Live Sound Console

Features

- Virtual Vi offline set up - Set up your shows offline and load them into the Vi3000 via USB
- VM2 radio mic status monitoring - Monitor the status of SHURE ULX-D and QLX-D and HiQnet-compatible AKG radio mics directly from the console surface with realtime visual displays of battery life, RF status, mic muting and internal clipping.
- BSS DPR901ii Dynamic EQ - this acclaimed industry-standard DEQ is built in as standard with 8 instances available for inserting on any input or output channel. The DEQ can be used at the same time as the existing channel EQ and Dynamics sections.
- Copy/Paste channel bus and FX settings - Dedicated Copy and Paste buttons on the surface allow the settings of any channel, bus or FX section to be copied and pasted, dramatically cutting down the set up time.
- Copy/Paste processing elements - Operators can drill down to copy and paste even single processing elements, and the last paste operation can always be quickly reversed with an UNDO function.
- Settings Library - Along with a useful library of EQ and Dynamics settings, operators can store their own settings in the console or to a USB memory stick, making initial set up and transition between shows even easier.
- Sophisticated Cue List Management - Allows changes to be applied to multiple cues and recall scope to be set per snapshot.
- Advanced events integration - Cues can trigger or be triggered by MIDI or GPIO events, including MIDI timecode. Harman's HiQnet Venue recall function is tightly integrated within the Cue List.
- Automated microphone mixing - STUDER vMIX processing is built-in, with ability to seamlessly process up to two separate groups of 16 inputs, with clear and intuitive metering showing gain reduction.
- Snapshot crossfades - Snapshot recalls can use crossfades to transition smoothly from one setting to the next.
- ViSi Remote iPad® app - Control major functions and optimise your mix from anywhere in the venue. Adjust monitor levels from the stage. Includes control of EQ Dynamics and metering overview.
- All busses to stereo - All busses can be turned to stereo without tying up two busses, providing a massive 24 stereo mix capability – perfect for mixing large monitor applications.
- 4 Aux send points - With a total of 4 aux send points, monitor mix engineers have the flexibility to tailor mixes more closely to performers' requirements. Sends can be pre-EQ, precompressor, pre-fade or post-fade on a per channel/per bus basis.
- Aux VCA mode - VCA master faders can control the aux sends of their member channels on a per mix basis, with a FaderGlow illuminating in white to indicate the VCA's operation on the current mix. Monitor engineers can retain control of important global elements such as ambient mics while also having a monitor mix selected and adjusting groups of sources within the current mix using the Aux-VCAs. Blue illumination of FaderGlow indicates that the VCA is controlling the global channel level to all mixes.
- Auto-increase of ambient mic levels in monitor mixes between songs - Performers using in-ear monitors want to hear the audience between songs. No problem. Vi3000 has the facility to externally control the Gate or Ducking processing from a bus in the console, so all you have to do is insert a ducker on an ambient mic with an external source of the LR bus or a spare bus, and the audience level increases automatically when the performers stop playing.



QL1 Digital Mixing Console

16 + 2 fader configuration in a compact, rack mountable unit.

- Mix channels: 32 mono, 8 stereo.
- Busses: 16 mix, 8 matrix (Input to Matrix supported).
- Local I/O: 16 in, 8 out.
- Fader configuration: 16 + 2 (Master).
- Rack mountable with optional RK1 Rack Mount Kit.



QL5 Digital Mixing Console

32 + 2 fader configuration adapts to a wide range of channel layouts.

- Mix channels: 64 mono, 8 stereo.
- Busses: 16 mix, 8 matrix (Input to Matrix supported).
- Local I/O: 32 in, 16 out.
- Fader configuration: 32 + 2 (Master).
- Stainless steel iPad support stays.



CL1 Digital Mixing Console

Dual 8-fader sections in a space-saving console that can be used alone or cascaded to another CL console for input expansion.

- Input channels: 48 mono, 8 stereo.
- Fader configuration: 8-fader left section, 8-fader Centralogic section, 2-fader master section .
- Meter bridge optional.



CL3 Digital Mixing Console

An ideal blend of compact size and channel capacity for a variety of live and installed applications.

- Input channels: 64 mono, 8 stereo.
- Fader configuration: 16-fader left section, 8-fader Centralogic section, 2-fader master section .
- Stainless steel stay for iPad support.
- Meter bridge optional.



CL5 Digital Mixing Console

With a three-section fader layout for efficient hands-on control, the CL5 is the ideal choice for a diverse spectrum of live sound systems.

- Input channels: 72 mono, 8 stereo.
- Fader configuration: 16-fader left section, 8-fader Centralogic section, 8-fader right section, 2-fader master section .
- Stainless steel stay for iPad support.
- Built-in meter bridge.



Rio1608-D2 I/O Rack

This high-performance I/O rack features 16 analog inputs and 8 analog outputs, and is compatible with Yamaha CL and QL series consoles as well as the RIVAGE PM series. The Rio1608-D2 connects directly to Dante digital audio networks, allowing flexible system configuration. Dual power supply units are built in for high reliability, and a character/graphic display offers easy visual confirmation.

- 16 analog inputs and 8 outputs.
- Redundant connections are supported with primary and secondary connectors. Daisy chain connections are also supported.
- Comprehensive display and local control of gain and other parameters.
- Dual power supply units are built in for high reliability.



Rio3224-D2 I/O Rack

This high-capacity, high-performance I/O rack is compatible with Yamaha CL and QL series consoles as well as the RIVAGE PM series. It features 32 analog inputs, 16 analog outputs, and eight digital AES/EBU outputs. The Rio3224-D2 connects directly to Dante digital audio networks, allowing flexible system configuration. Dual power supply units are built in for high reliability, and a character/graphic display offers easy visual confirmation.

- 32 analog inputs and 16 outputs, and 8 digital outputs.
- Redundant connections are supported with primary and secondary connectors. Daisy chain connections are also supported.
- Comprehensive display and local control of gain and other parameters.
- Dual power supply units are built in for high reliability.



FISCHER 1051 DSR



FISCHER 1051 DKE

FISCHER

Industry standard Fischer 1051 series triax connectors, sealed to IP68, for studio, outside broadcast and microwave links. See also 1051 TRIAX HD pro+ connectors and DRAKA TRIAX 11 HD PRO cable for extended performance up to 1700m.

The 1051 triax connector series was completely re-engineered in 2007 resulting in fewer internal parts aiding quick and reliable termination, a more rugged exterior, IP68 protection when mated or fitted with dust caps and improved RF / HD / 3G HD performance.



FISCHER 1051 KE



FISCHER 1051 SE



LEMO PUW.3K.93C

LEMO

- Hybrid with:
2 fibre optic contacts
2 signal contacts
2 power contacts and ground
- Push-Pull self-latching
- Keying W code
- Over 11 shell styles
- Stainless steel shell
- Temp. range -55°C to 90°C
- Shielded
- UL approved
- Conform to ARIB standard
- Conform to SMPTE 304 standard



LEMO FUW.3K.93C



NC3FD-L-1

NEUTRIK

3 pole female receptacle, solder cups, Nickel housing, silver contacts Universal D-size metal body XLR panel mount series. UL recognized component.



NC3MD-L-1



MGA Engineering Global Dış. Tic. Ltd. Şti.



Barbaros Mah. Gülpınar Sok. Sembol Han No: 5 İç Kapı No: 2
Ataşehir/İstanbul



+90 216 324 64 64



info@mgaengglobal.com



www.mgaengglobal.com